



- ▶ Most Consistent & Efficient Seal Across Varying Trailer Heights
- ▶ Sealing Efficiency Protects Personnel & Property
- ▶ Increases Loading Dock Safety While Improving Comfort & Productivity
- ▶ Available as a Single Unit with “L” Style Side Pads or Header Retrofits Existing Installed Seals & Shelters
- ▶ Unique Patented Head Pivot Assembly Provides Automatic Positioning & Tension for a Tight Seal
- ▶ Tightly Seals the Entire Width of the Trailer Roof, Blocks Water & Gives Access to Full Trailer Height
- ▶ Yellow Guide Stripes on the “L” Pad Assist the Driver in Positioning the Trailer
- ▶ Bottom Filler Panel at Each “L” Pad Aids in Preventing Air Flow into the Loading Dock Area
- ▶ Rough Flex™ Base Fabric with Superior Performance Max Flex™ Reinforcement on Header & “L” Pads Provide Maximum Durability

Specifications

Specifications: Dock seal/shelter shall be Series TC _____ as provided by W.B. McGuire™ Company. Each unit shall be designed to accommodate an opening size up to _____ wide x _____ high; having a _____" dock height; equipped with _____" projection dock bumpers. Unit shall be designed to service vehicles ranging in height from _____ to _____. Each unit shall be constructed of (2) side pads of an "L" style design and (1) head frame assembly with a spring bias head pad system having the following O.D. dimensions: 11'-2" wide x 11'-0" high x 16" projection.

The head and side pads shall be constructed having a Rough Flex™ base material; with the entire contact face of both side and head pads further reinforced with superior performance Max Flex™ material.

Head frames shall be constructed of structural steel tubing having all welded joints with translucent fiberglass secured to the exterior.

Each unit shall include one pair of self positioning, independent panels equipped with Durapleat® pleats designed to close the transition gap between the face of the head and side pads, while providing additional reinforcement to this area.

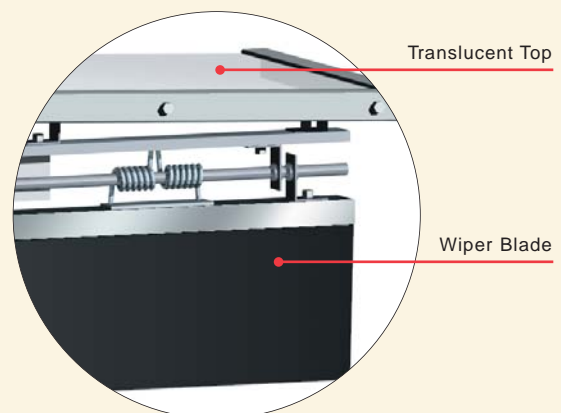
Head pad pivot mechanism will provide positioning and tensioning for the head member to create a weather tight seal at the top of the vehicle. Head member projects beyond the side pads. Each unit shall include a front and rear head curtain to conceal and protect the head pad pivot assembly from the elements. All hardware shall be galvanized steel.

Options

- | | |
|----------------------------|--|
| Base Fabric: reinforcement | • Rough Flex™ with Max Flex™ on header and L-pads |
| Options: | <ul style="list-style-type: none"> • Head Pad assembly for use with existing seals or shelters • Additional projections • Tapered units |



Weather Sentry™ head member shown is installed over an existing seal.



W.B. McGuire™ Company
 205 Broadview Street
 P.O. Box 151
 Upper Sandusky, OH 43351
 Phone 1.800.262.1188
 Fax 419.294.4980
www.wbmcguire.com



Series TC300: Flexible Steel Dock Shelter

LOADING DOCK SEALS & SHELTERS



- ▶ Services the Widest Variety of High Volume Traffic with Varying Widths & Heights
- ▶ Durable Frame of Double Kiln Dried Pressure Treated Lumber at Rear, Galvanized Steel Tube Framing & X-Arm Sides with Raked Header to Permit Drainage
- ▶ Complete with Flexible Translucent Covering to Provide Protection from the Elements & Admit Light
- ▶ 2 Added Layers of Fabric on Side Curtains Reinforce Bottom & Prolong Life
- ▶ Provides Full Unimpeded Access to Interior of Trailer
- ▶ Yellow Guide Stripes to Assist Positioning of Trailers
- ▶ Foam Bottom Draft Pads At Each Side Help Prevent Air Flow Into the Loading Dock Area
- ▶ Wide Selection of Highly Durable Fabrics & Wear Surfaces to Maximize Durability
- ▶ Steel Bumper Stop Assembly Protects the Shelter From Misguided Trailers

Specifications

Specifications: Dock Shelters shall be model TC _____ as provided by W.B. McGuire™ Company. Each unit shall be designed to accommodate an opening size up to _____ wide x _____ high; having a _____" dock height; equipped with _____" projection dock bumpers and a level drive approach. Unit shall be designed to service vehicles ranging in height from _____ to _____. Each unit shall be constructed having the following minimum dimensions: 11'-6" wide x 11'-0" high x 24" projection.

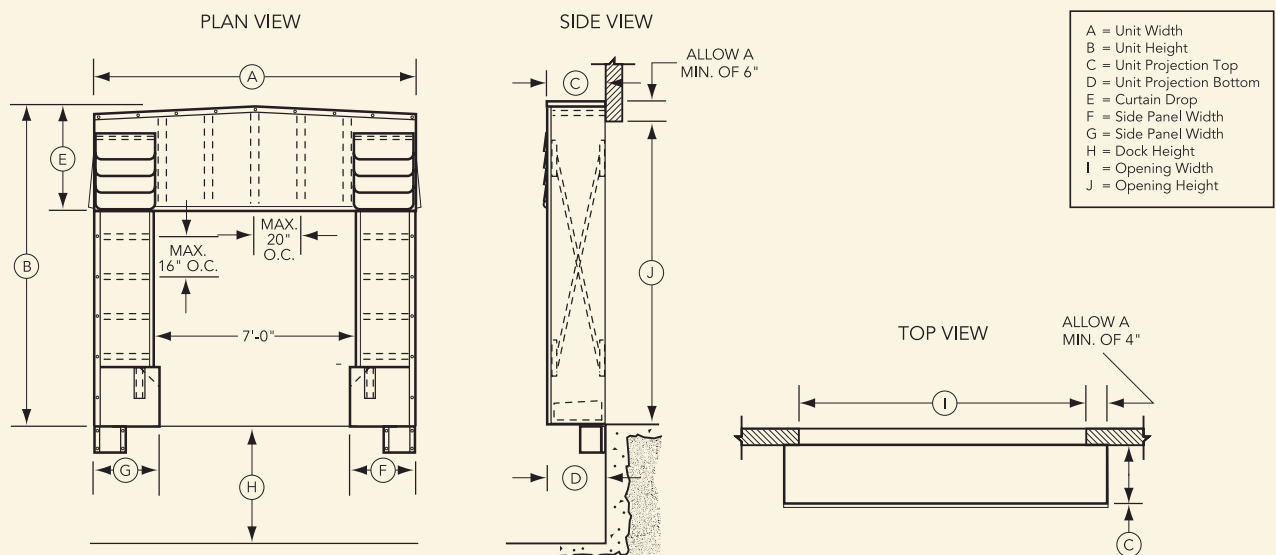
Side curtains to be reinforced with Max Flex™ multiply bottom panels, equipped with a highly visible guide stripe. Head curtain shall have Durapleat® overlapping panels at each end and shall be stabilized by wind straps. Side curtain edges shall encase a continuous closed cell neoprene cord. The top sections of each side curtain to include a full "Z" stay pattern. All curtains shall encase 3M "Scotch-Ply®" stays (steel not acceptable) enclosed by multilayer reinforcement sleeves. Stays to be spaced evenly with a maximum of 14" O.C. in side curtains and a 20" maximum O.C. in head curtain.

Shelter shall consist of yieldable head and side frames constructed of: (3) three piece pressure treated wood rear frames (kiln dried before and after treating) and a tubular galvanized steel front frame and cross-arms; frame construction shall provide for all joints and connections to be continuous welded; having translucent material secured to the exteriors and designed to yield under misdirected or abnormal contact. Two structural steel bumper stops act as limit stops on wall. The head frame shall be sloped from center to provide for adequate drainage. Exterior frame corners shall be trimmed with aluminum angle. One pair of covered polyurethane foam bottom draft pads of a wedge design to be furnished per shelter. All hardware shall be galvanized steel.

Options

- Base Fabric:
- Max Flex™ (heavy usage)
 - Truk Flex™ (heavy usage)
 - Rough Flex™ (medium usage)
 - 22 oz. Vinyl (medium usage)
 - 40 oz. Vinyl (medium/heavy usage)

- Options:
- Additional projections beyond 24" standard
 - Tapered units



W.B. McGuire™ Company
 205 Broadview Street
 P.O. Box 151
 Upper Sandusky, OH 43351
 Phone 1.800.262.1188
 Fax 419.294.4980
www.wbmcguire.com

**INTERNATIONAL
DOOR**

- ▶ Services the Widest Variety of High Volume Traffic with Varying Widths & Heights
- ▶ Durable Rigid Frame of Either Double Kiln Dried Pressure Treated Lumber or Steel Tube Framing with Raked Header to Permit Drainage
- ▶ Complete with Flexible Translucent Covering to Provide Protection from the Elements & Admit Light
- ▶ 2 Added Layers of Fabric on Side Curtains Reinforce Bottom & Prolong Life
- ▶ Flexible ScotchPly® Stays Enable Curtain to Tightly Seal Against Trailer
- ▶ Durapleat®(s) on the Outer Edge Protect Against Tears
- ▶ Provides Full Unimpeded Access to Interior of Trailer
- ▶ Yellow Guide Stripes to Assist Positioning of Trailers
- ▶ Foam Bottom Draft Pads At Each Side Help Prevent Air Flow Into the Loading Dock Area
- ▶ Steel Bumper Stops Protects From Misguided Trailers

Specifications

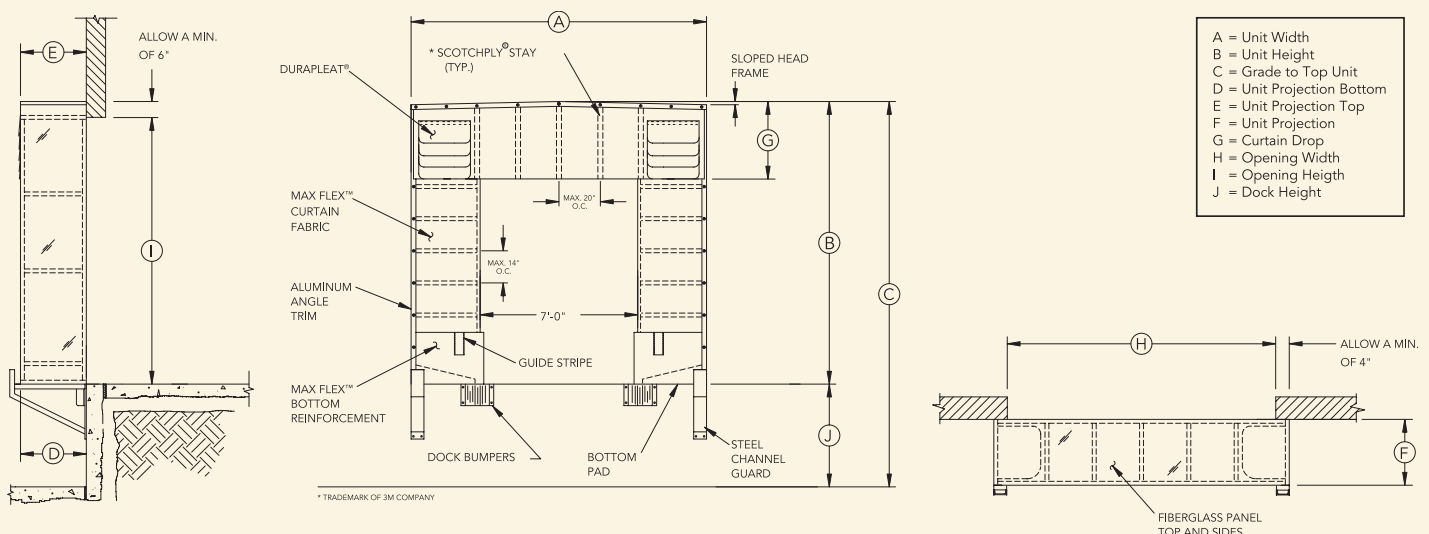
Specifications: Dock Shelters shall be model TC _____ as provided by W.B. McGuire™ Company. Side and head curtain fabric to be _____ as specified. Side curtains to be reinforced with Max Flex™, multi-ply bottom panels, equipped with highly visible guide stripes. Head curtain shall have end and shall be stabilized by wind straps. Side curtain edges shall encase a continuous closed cell neoprene cord. The top section of the side curtain to include a full "Z" stay pattern. All curtains shall encase 3M "Scotchply®" stays (steel not acceptable) enclosed by multi-layer reinforcement sleeves. Stays to be spaced evenly with maximum of 14" O.C. in side curtains and a 20" maximum O.C. in head curtain.

Shelter shall consist of three rigid, select structural grade, pressure treated wood frames, kiln dried before and after treating having translucent fiberglass secured to the exteriors, by the means of self-sealing wood screws (staples not acceptable). The frame shall be assembled with screw shank nails and head frame with counterbored lag screws to maintain greater structural integrity. (Steel frames are optional.) The 2" x 6" head frame shall be sloped from center to provide for adequate drainage. Exterior frame corners shall be trimmed with aluminum angle. One pair of covered polyurethane foam bottom draft pads of 8" to 2" wedge design to be furnished per shelter. All hardware shall be galvanized steel. Unit shall include two factory painted 6" structural steel channel guards.

Options

- Base Fabric:
- Max Flex™ (heavy usage)
 - Truk Flex™ (heavy usage)
 - Rough Flex™ (medium usage)
 - 22 oz. Vinyl (medium usage)
 - 40 oz. Vinyl (medium/heavy usage)

- Options:
- Additional projections beyond 24" standard
 - Tapered units
 - Common member frames – steel tube framing



W.B. McGuire™ Company
 205 Broadview Street
 P.O. Box 151
 Upper Sandusky, OH 43351
 Phone 1.800.262.1188
 Fax 419.294.4980
www.wbmcguire.com

**McGUIRE**

- ▶ Services A Wide Variety of High Volume Traffic with Varying Widths & Heights
- ▶ Impact Absorbing Foam Filled Side Frames Eliminate Wood & Fiberglass Side Frames & Allows the Use of Standard Bumpers in Place of Steel Guards
- ▶ Integral Structural Supported Head Member is Translucent to Allow Light & Raked for Drainage
- ▶ Provides Full Unimpeded Access to Trailer
- ▶ Yellow Guide Stripes to Assist Positioning of Trailers
- ▶ 2 Added Layers of Fabric on Side Curtains Reinforce Bottom & Prolong Life
- ▶ Flexible ScotchPly® Stays Enable Curtain to Tightly Seal Against Trailer
- ▶ Durapleat®(s) on the Outer Edge Protect Against Tears
- ▶ Foam Bottom Draft Pads At Each Side Help Prevent Air Flow Into the Loading Dock Area
- ▶ Wide Selection of Highly Durable Fabrics & Wear Surfaces to Maximize Durability

Specifications

Dock shelters shall be Series TC _____ as provided by W.B. McGuire™ Company. Each unit shall be designed to accommodate an opening size up to _____ wide x _____ high; having a _____" dock height; equipped with _____" projection dock bumpers and a level drive approach. Unit shall be designed to service vehicles ranging in height from _____ to _____. Each unit shall be constructed having the following minimum dimensions: 12'-0" wide x 11'-0" high x 18" projection.

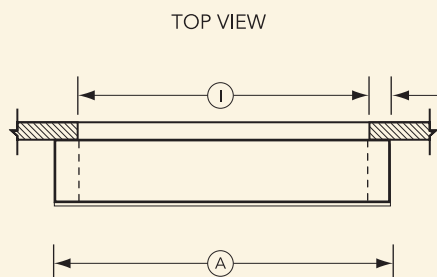
Side curtains shall be reinforced with multi-ply bottom panels, equipped with a highly visible guide stripe. Side curtains shall be attached to and removable from the foam side frames by the means of corrosion resistant, locking fasteners that engage factory installed threaded studs. Head curtain shall include overlapping pleats at each end. Side curtain edges shall encase a continuous closed cell neoprene cord. The top section of each side curtain to include a full "Z" stay pattern. All curtains shall encase 3M "Scotchply®" stays enclosed by multilayer reinforcement sleeves. Stays with a maximum of 16" O.C. in side curtains and a 20" maximum O.C. in head curtain.

Shelter shall consist of (2) fabric covered polyurethane foam side frames, which are to be chemically welded to a 2" thick, pressure treated, kiln dried before and after treating (KDAT) wood frame. At the point of attachment, the stay shall be through bolted to the polypropylene through the grommetted fabric and the stay.

Shelter shall include (1) rigid head frame constructed of select structural grade, pressure treated lumber, kiln dried before and after treating, having translucent fiberglass secured to the exterior by the means of self sealing wood screws (staples not acceptable). The 2" x 6" head frame shall be sloped from center for drainage. Exterior head frame corner to be trimmed with aluminum angle that shall be through bolted to the frames, through the aluminum trim, grommetted fabric and the stay. (Lag screw attachment not acceptable).

One pair of covered foam bottom draft pads of an 8" to 2" wedge design, to be furnished per shelter. All hardware shall be galvanized steel.

- A = Unit Width
- B = Unit Height
- C = Unit Projection Top
- D = Unit Projection Bottom
- E = Curtain Drop
- F = Side Panel Width
- G = Side Panel Width
- H = Dock Height
- I = Opening Width
- J = Opening Height



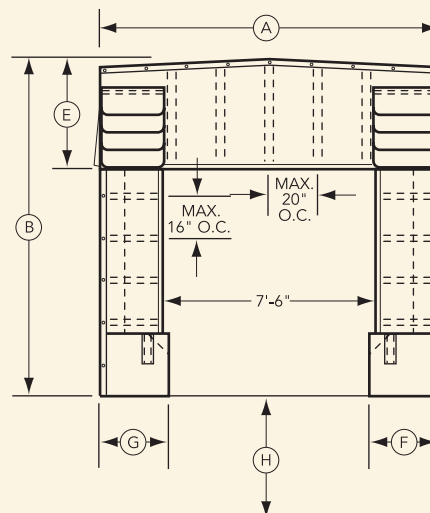
Options

- Base Fabric:
- Max Flex™ (heavy usage)
 - Truk Flex™ (heavy usage)
 - Rough Flex™ (medium usage)
 - 22 oz. Vinyl (medium usage)
 - 40 oz. Vinyl (medium/heavy usage)

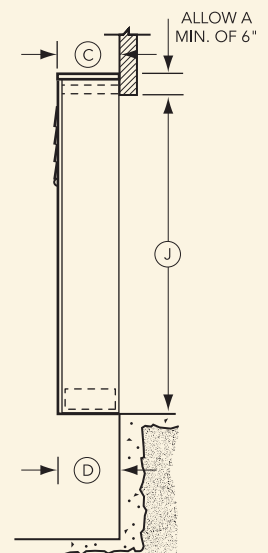
- Options:
- Additional projections beyond 18" standard
 - Tapered units



PLAN VIEW



SIDE VIEW



W.B. McGuire™ Company
 205 Broadview Street
 P.O. Box 151
 Upper Sandusky, OH 43351
 Phone 1.800.262.1188
 Fax 419.294.4980
www.wbmcguire.com



- ▶ **Tightest Possible Seal Between Interior & Exterior Environments**
- ▶ **Accommodates High Volume Traffic with Consistent Widths & Heights**
- ▶ **Pressure Treated Lumber, Kiln Dried Before & After Treatment**
- ▶ **Full Length Yellow Guide Stripes to Assist Drivers Positioning of Trailers**
- ▶ **All Pads Are Vented for Air & Moisture Release**
- ▶ **Tapered Pad Bottoms Avoid Wear & Pinching**
- ▶ **Quick Recovery, Highly Resilient, Endurance Tested Foam Compresses Easily & Yet Maintains Original Shape**
- ▶ **Foam is Chemically Welded to Double Kiln Dried Pressure Treated Lumber with Non-flammable Adhesive**
- ▶ **Wide Selection of Highly Durable Fabrics & Wear Surfaces to Maximize Durability**

Specifications

Specifications: Dock Seals shall be model TS _____ as provided by W.B. McGuire™ Company to fit a door opening _____ wide x _____ high. Head and side pads shall enclose a polyurethane foam pad, which is to be chemically welded to a 2" thick, pressure treated wood frame, kiln dried before and after treating. (Steel frame is optional.) The cover shall wrap behind the wood weather-tight construction. Adequate air exhausts and drain holes are to be provided in covers, and both shall be designed to prohibit moisture infiltration. Side pads shall include full length, highly visible guide stripes. All hardware shall be galvanized steel.

Standard unit shall consist of two side pads that mount vertically along both sides of the door opening. Unit shall have one head pad that mounts horizontally across the top of the side pads. Various pad widths, projections, tapers and bevel shapes are available.

Models

TS111 — 22 oz. Vinyl
 TS121 — 40 oz. Vinyl
 TS131 — 16 oz. Hypalon
 TS141 — Truk Flex™
 TS151 — Rough Flex™

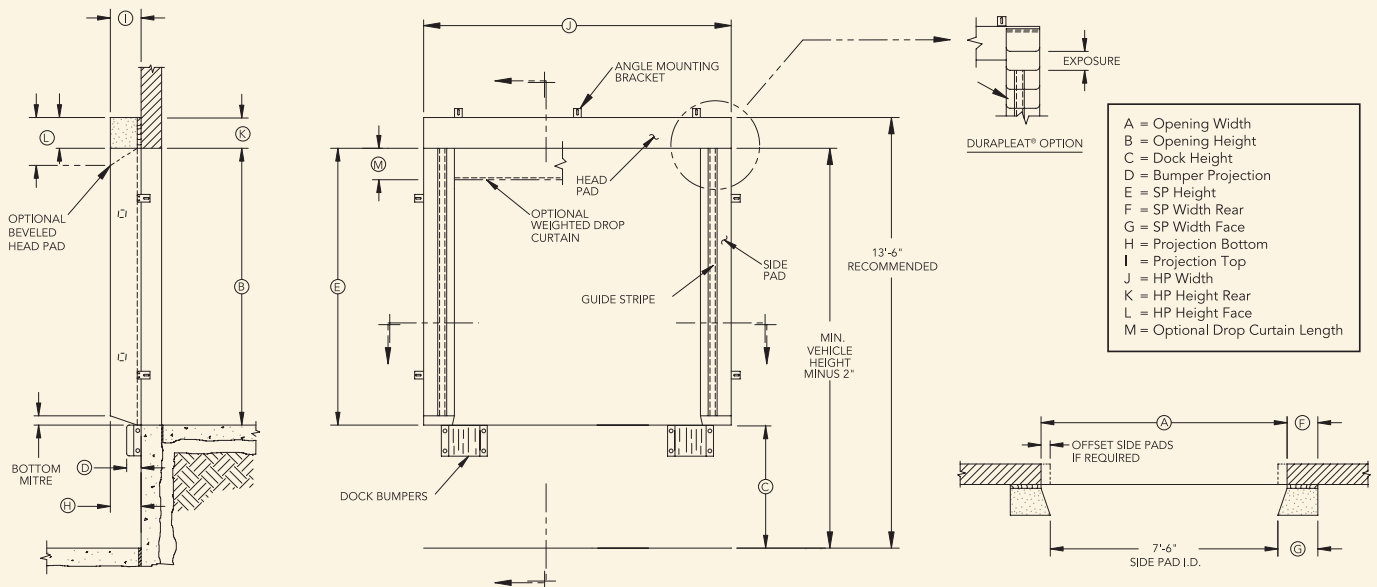
Options

Base Fabric:
 (in a variety of colors)

- Truk Flex™ (heavy usage)
- Rough Flex™ (medium usage)
- 22 oz. Vinyl (medium usage)
- 40 oz. Vinyl (medium/heavy usage)
- 16 oz. Hypalon® (light – base cover only)

Durapleat®:

- 4" exposure
- 8" exposure
- 16" exposure
- Beveled side and/or head pads
- Tapered side pads
- Additional projections beyond 10" standard - Drop curtains for fixed head pads



W.B. McGuire™ Company
 205 Broadview Street
 P.O. Box 151
 Upper Sandusky, OH 43351
 Phone 1.800.262.1188
 Fax 419.294.4980
www.wbmcguire.com

**INTERNATIONAL
DOOR**

- ▶ Head Curtain Accommodates High Volume Traffic with Differing Trailer Heights
- ▶ Top of Unit is Sloped Forward to Promote Water Drainage & Supported by Wood 2"x 4" at Wall
- ▶ Tapered Top is Supported at Front by Tubular Metal Support Inside Curtain
- ▶ Full Length Yellow Guide Stripes to Assist Drivers Positioning of Trailers
- ▶ All Pads Are Vented for Air & Moisture Release
- ▶ Quick Recovery, Highly Resilient, Endurance Tested Foam Compresses Easily & Yet Maintains Original Shape
- ▶ Foam is Chemically Welded to Double Kiln Dried Pressure Treated Lumber with Non-flammable Adhesive
- ▶ Wide Selection of Highly Durable Fabrics & Wear Surfaces to Maximize Durability
- ▶ Intermediate Fiberglass Stays in Curtain Add Stiffness to Aid in Prevention of Sagging

Specifications

Specifications: Dock Seals shall be model TS _____ as provided by W.B. McGuire™ Company to fit a door opening _____ wide x _____ high. Side pads shall enclose a polyurethane foam pad, which is to be chemically welded to a 2" thick, pressure treated wood frame, kiln dried before and after treating. (Steel frame is optional.) The cover shall wrap behind the wood weather-tight construction. Adequate air exhausts and drain holes are to be provided in covers, and both shall be designed to prohibit moisture infiltration. Side pads shall include full length, highly visible guide stripes. Mounting hardware shall be galvanized steel.

Standard unit shall consist of two side pads that mount vertically along both sides of the door opening. The head curtain shall be secured at the building face by the means of a pressure treated, kiln dried before and after treating, 2"x4" wood head frame, which shall be mounted over the top of the side pads with the head curtain tapering away to provide for adequate drainage. Unit shall include intermediate "Scotchply®" stays, a front tubular metal support and tension straps to keep head curtain taut. The support tubing shall be held in place by a fabric sleeve sewn into the head curtain. Various pad widths, projections, tapers and bevel shapes are available.

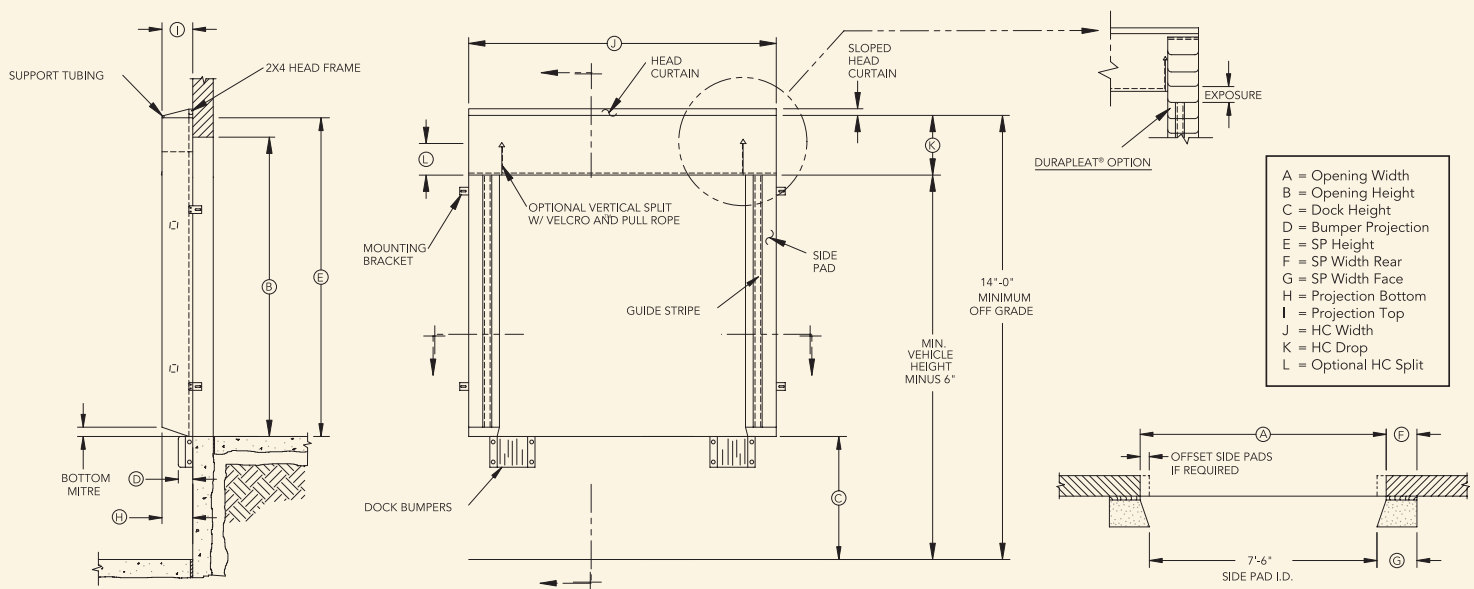
Options

Base Fabric:

- Truk Flex™ (heavy usage)
- Rough Flex™ (medium usage)
- 22 oz. Vinyl (medium usage)
- 40 oz. Vinyl (medium/heavy usage)
- 16 oz. Hypalon® (light – base cover only)

Durapleat®:

- 4" exposure
- 8" exposure
- 16" exposure
- Beveled side and/or head pads
- Tapered side pads
- Additional projections beyond 10" standard
- Split curtains with rope and pulley



W.B. McGuire™ Company
 205 Broadview Street
 P.O. Box 151
 Upper Sandusky, OH 43351
 Phone 1.800.262.1188
 Fax 419.294.4980
www.wbmcguire.com



- ▶ Accommodates High Volume & Varying Trailer Heights
- ▶ Standard 12" High Head Pad, Mounted on Galvanized Steel Frame that Travels in Slide Tracks
- ▶ Normal 18" Head Pad Travel Accommodates Most Trailers, Optional Travels Available
- ▶ Full Width Follower Curtain Attached to Adjustable Head Pad Closes Off the Opening Automatically
- ▶ Galvanized Metal Hood Encloses & Protects the Counterbalance Mechanism
- ▶ Yellow Guide Stripes to Assist Positioning of Trailers
- ▶ All Pads Are Vented for Air & Moisture Release
- ▶ Quick Recovery, Highly Resilient, Endurance Tested Foam Compresses Easily & Yet Maintains Original Shape
- ▶ Foam is Chemically Welded to Double Kiln Dried Pressure Treated Lumber with Non-flammable Adhesive
- ▶ Wide Selection of Highly Durable Fabrics & Wear Surfaces to Maximize Durability

Specifications

Specifications: Dock Seals shall be model TS _____ as provided by W.B. McGuire™ Company to fit a door opening _____ wide x _____ high. Side pad covers shall wrap behind the wood frames and be secured with electro galvanized steel staples for weather-tight construction. The head pad cover shall attach to the steel frame by means of self-sealing screws through grommets in the hemmed perimeter. Adequate air exhausts and drain holes are to be provided in covers, and both shall be designed to prohibit moisture infiltration. Side pads shall include full length, highly visible guide stripes. Mounting hardware shall be galvanized steel.

Standard unit shall consist of two side pads that mount vertically along both sides of the door opening. The head pad shall be equipped with steel guide pins that glide in the formed steel track which is to be mounted at the upper area of each side jamb. A full width follower curtain shall wrap around the curtain shaft which is held in place by sealed ball bearings at each end. The counterweight connection to the cable drum by the means of a stainless steel cable shall provide for the effortless rotation of the curtain shaft. A galvanized metal hood is provided to enclose the counterbalance mechanism. Various pad widths, projections, tapers and bevel shapes are available.

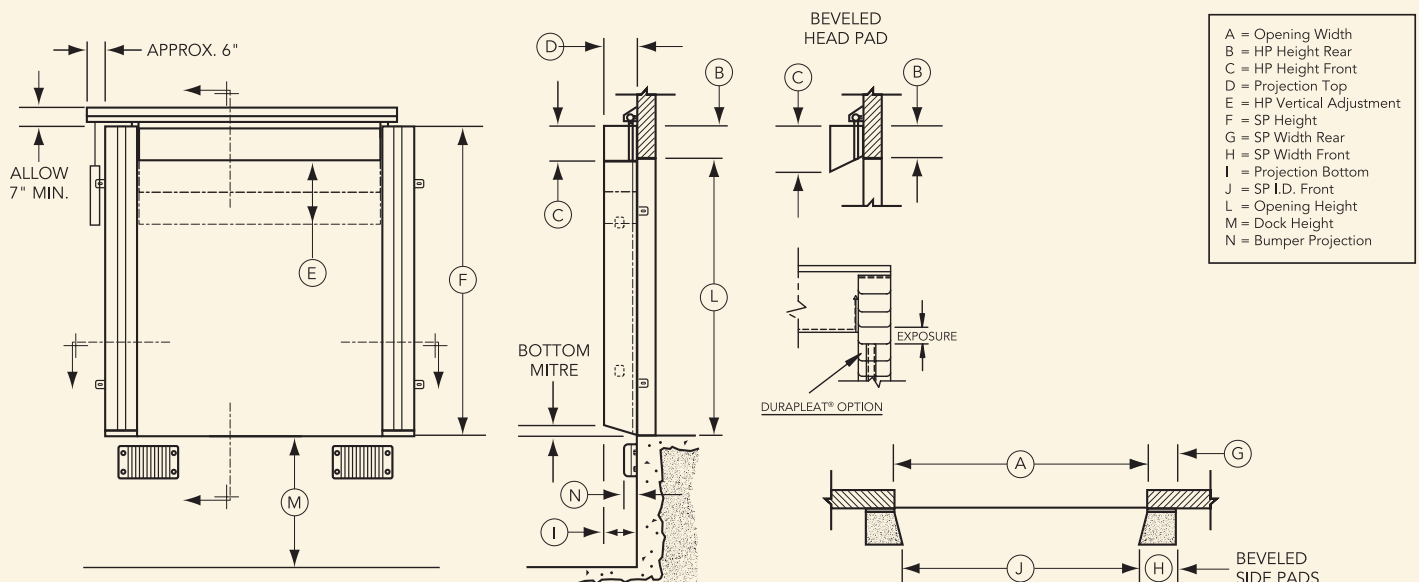
Options

Base Fabric:

- Truk Flex™ (heavy usage)
- Rough Flex™ (medium usage)
- 22 oz. Vinyl (medium usage)
- 40 oz. Vinyl (medium/heavy usage)
- 16 oz. Hypalon® (light – base cover only)

Durapleat®:

- 4" exposure
- 8" exposure
- 16" exposure
- Beveled side pads
- Tapered side pads
- Additional projections beyond 10" standard
- Counterweight covers



W.B. McGuire™ Company
 205 Broadview Street
 P.O. Box 151
 Upper Sandusky, OH 43351
 Phone 1.800.262.1188
 Fax 419.294.4980
www.wbmcguire.com